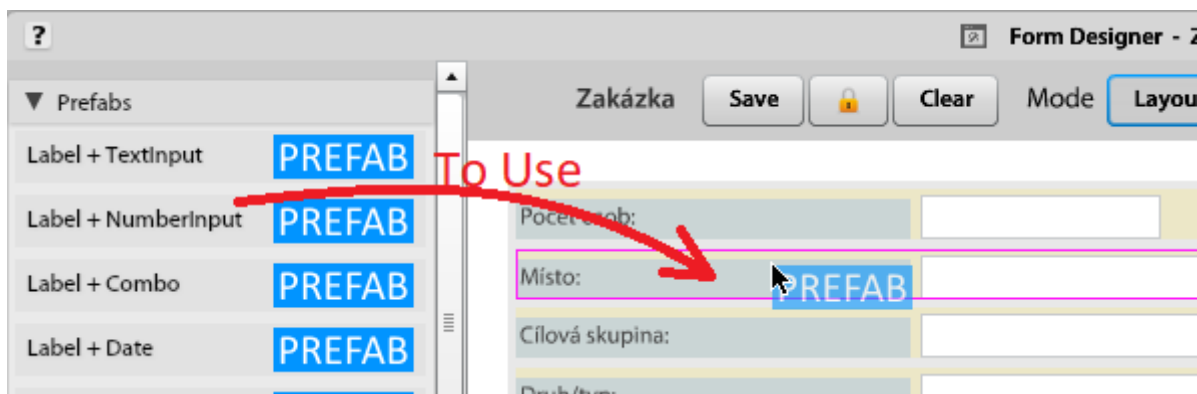


Custom Forms Designer

The Form Designer is interfaced for management and creating a new form in folders. Atollon has most of the tools and forms ready for use, but in *Form Designer*, you can make other forms, or move with the objects in the forms.

Working with Form Designer

Most of function in designer is created to drag and drop function.

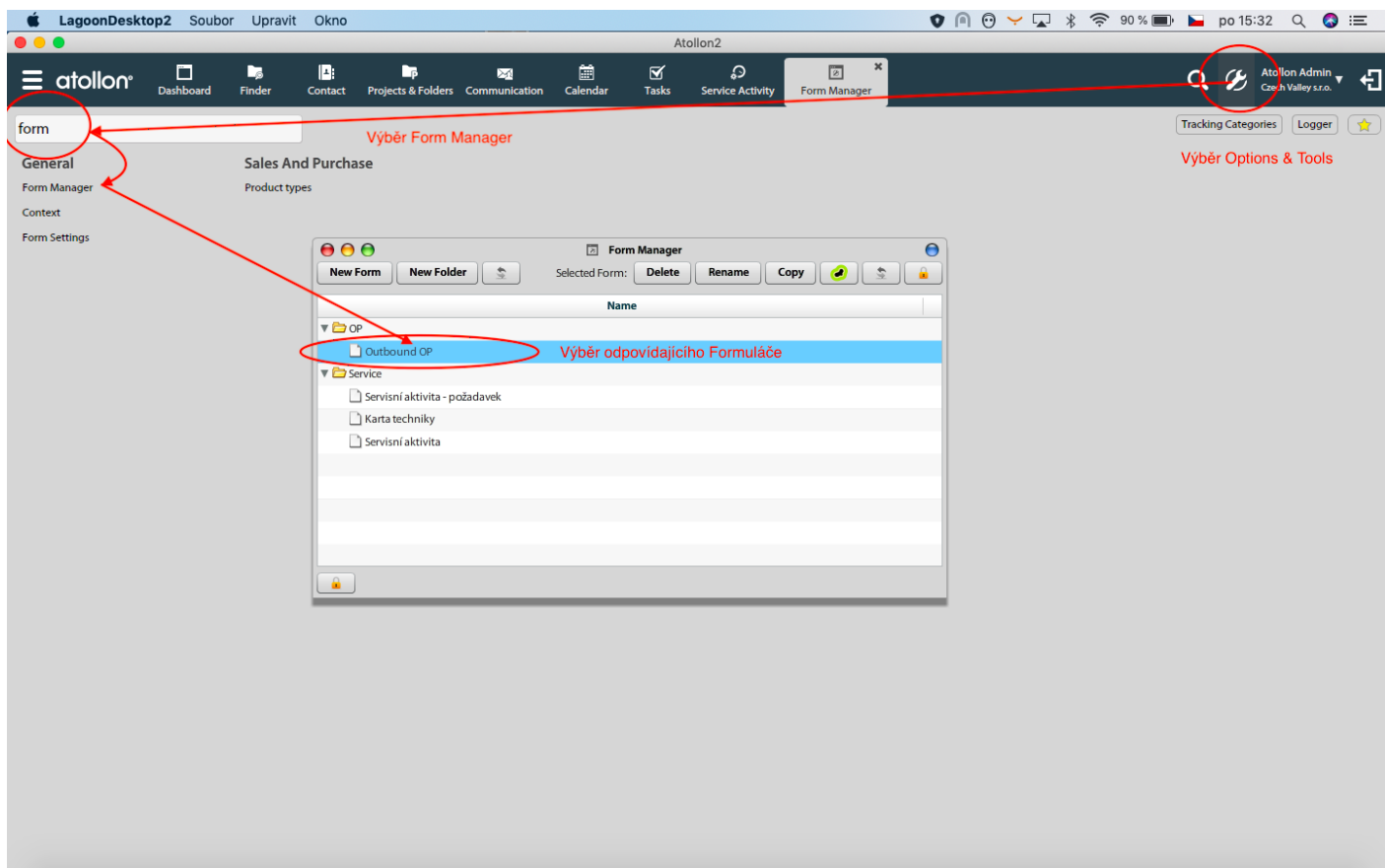


For Delete it use shortcut **SHIFT+DEL**

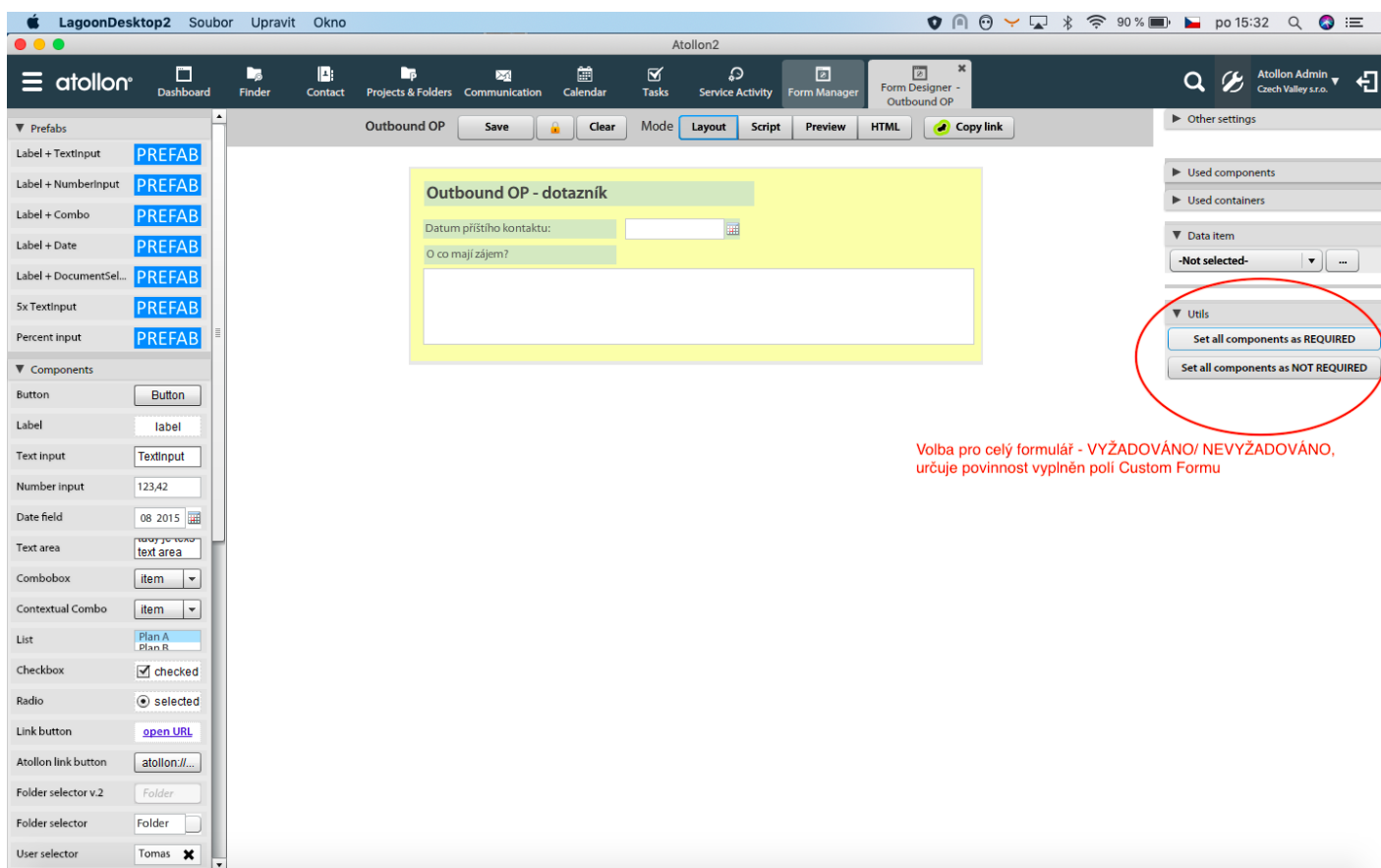
Required vs. Not Required components in a FORM

The components of every custom form should be defined even as Required or Not-Required. Every Required component shall be filled before saving, otherwise saving will not be allowed. Every such a field is highlighted (red colour) in order to provide a quick visual reference.

This is how to get a Form from Form Manager



This is how to choose appropriate (collective) setting for **all components** in one Form.



This is how to choose appropriate setting for **one specific component or field** in a Form.

Atollon2

Outbound OP

Save Clear Mode Layout Script Preview HTML Copy link

Outbound OP - dotazník

Datum příštího kontaktu:

O co mají zájem?

Volba pro dílčí pole Formuláře, která určuje povinnost vyplnění

Other settings

Used components

Used containers

Data item

DatumPristihoKontakty

Main

DatumPristihoKont Identifier

Datum příštího kon Caption

Editable

Required

Dimensions

Width

Height

Width (%)

Height (%)

Min width

Min height

Max width

Max height

Position

X

Y

Others

Apiha

Visible

Revision #2

Created 21 March 2020 06:45:40 by Jan Safka

Updated 9 November 2020 15:04:52