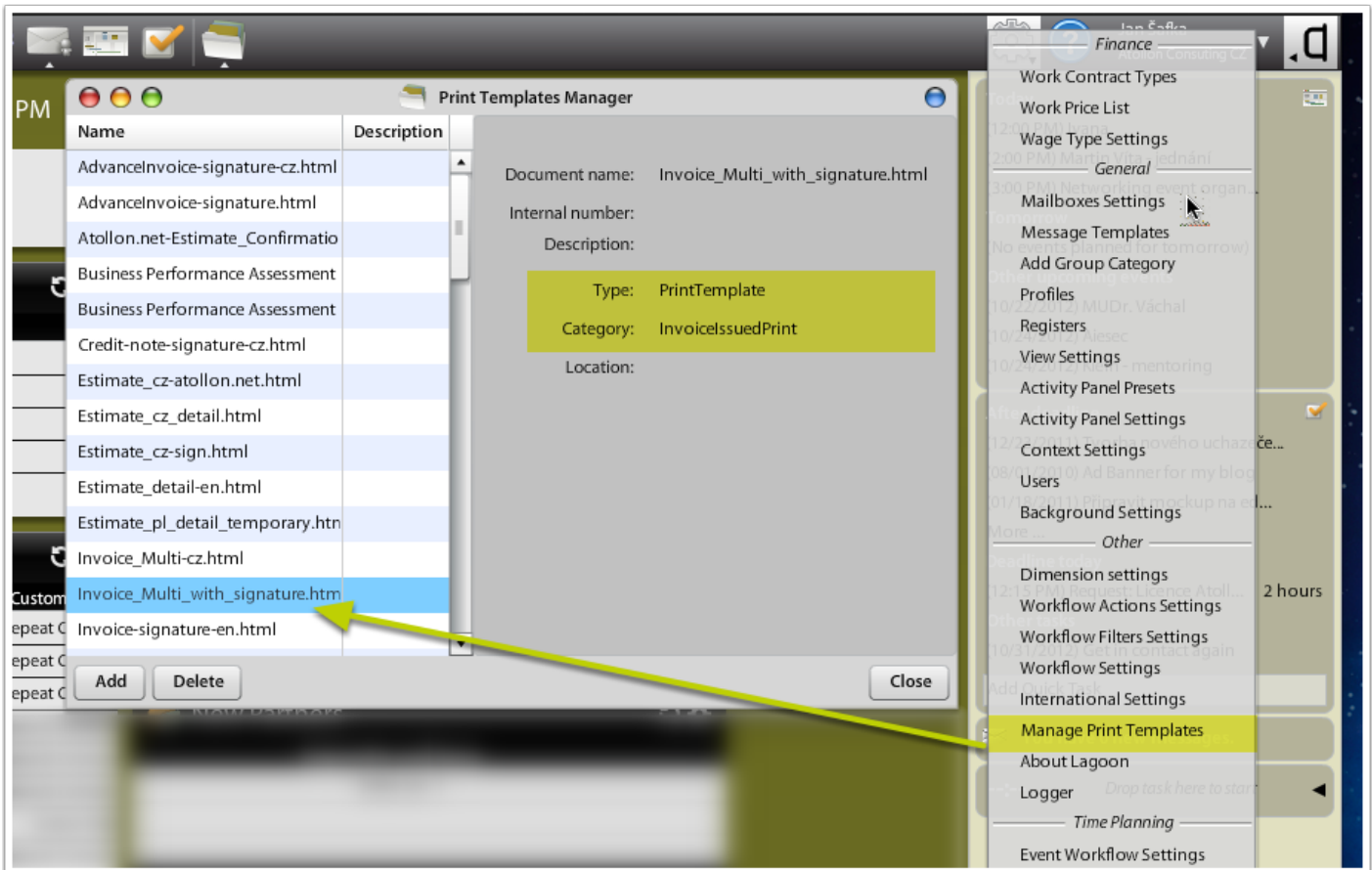


Print Templates

Uploading New Print Templates

To open the **Manage Print Templates** dialog, go to **Options & Tools > Manage Print Templates**.



Using this tool you may upload 2 types of templates:

a) XHTML print template

These templates are designed for the purpose of printing and converting to PDF. It can be simple XHTML-compliant document, but may also incorporate data gathered from Atollon.

b) XLS template

Atollon supports generating MS Excel output from Atollon data.

Document Type

When uploading the Print Template, it must be set (by default) to "*PrintTemplate*" Document Type.

Document Category

The Print Template document must be assigned to appropriate Document Category. Print dialogues in Atollon filter Print Templates based on Print Categories. For example in order to print Estimate, you must upload template into *EstimatePrint* it's Document Category.

In order to get list of print categories, go to [Print Template Categories](#) page.

Print Templates Design

To learn more about Print Template Design, read [Mooring Templating Guide](#). Using Atollon Logger application, you may get PrintJob data available to the Print Template. All data that are available in PrintJob may be used in output.

To learn more about exporting into Excel, read [Excel Templating Guide](#).

Download Sample Print Templates

You may be provided with public sample print templates for free. For that please contact atollon or your implementation partner.

Revision #1

Created 15 March 2020 06:51:06 by Jan Safka

Updated 16 March 2020 17:11:02 by Jan Safka